

IMS ALLIANCE

Advocates for Iowa's Health

IMSA

IOWA MEDICAL SOCIETY ALLIANCE

1001 Grand Avenue
West Des Moines, IA 50265
www.iowamedical.org

IMSA Promise

Building Healthy Communities

The IMS Alliance partners with physicians to improve the health of Iowans and to support the medical family.

History

In 1929, the Iowa Medical Society Auxiliary was founded to promote friendliness, to guide health activities, to promote health education and to meet the needs of local communities.

Today, the IMS Alliance partners with physicians to improve the health of lowans and to support the medical family.

We educate children and families about healthy living, raise funds for the AMA Foundation and promote the medical profession through grassroots legislative activities.

How The Alliance Helps You!

WHO WE ARE

- The "Family of Medicine" - Spouses of Physicians, medical students, residents, or widows (Requirement of membership)
-
- We Are:
-
- Professionals - Career Oriented (in and out of our homes)
- Our Potential Membership is Diverse
- Activists in our communities as "Leaders of Change" in a myriad of organizations

WHAT WE DO

Support Medical Families

- Give emotional and psychological support through
- Networking and Friendships
-

Activists

- We identify health needs, then initiate and implement health education programs in our communities across the nation
-
- We speak with credibility because of our direct connection with physicians who are caring for all people
-

Share experiences as a medical family

- And support our physicians and their families through a life that our society and culture expects to be dedicated to the services of others

LEGISLATIVE ADVOCACY



- Through Legislative Advocacy we protect and defend patient rights and access to health care:
- - Through on-going efforts to educate and inform our legislators about the complicated issues of medicine.
- .

LEADERSHIP POTENTIAL



- Through State and National conferences - Alliance provides opportunities for:
-
- - Members to develop leadership skills that can be used throughout life to become "engines of change" in our communities and in our careers.

National – State - County

How are We Connected?

The American Medical Association Alliance provides the State Alliances with resources, and technical support, such as:

- Health Projects
- Legislative Advocacy Tools
- Membership Marketing Guides
- Leadership Training

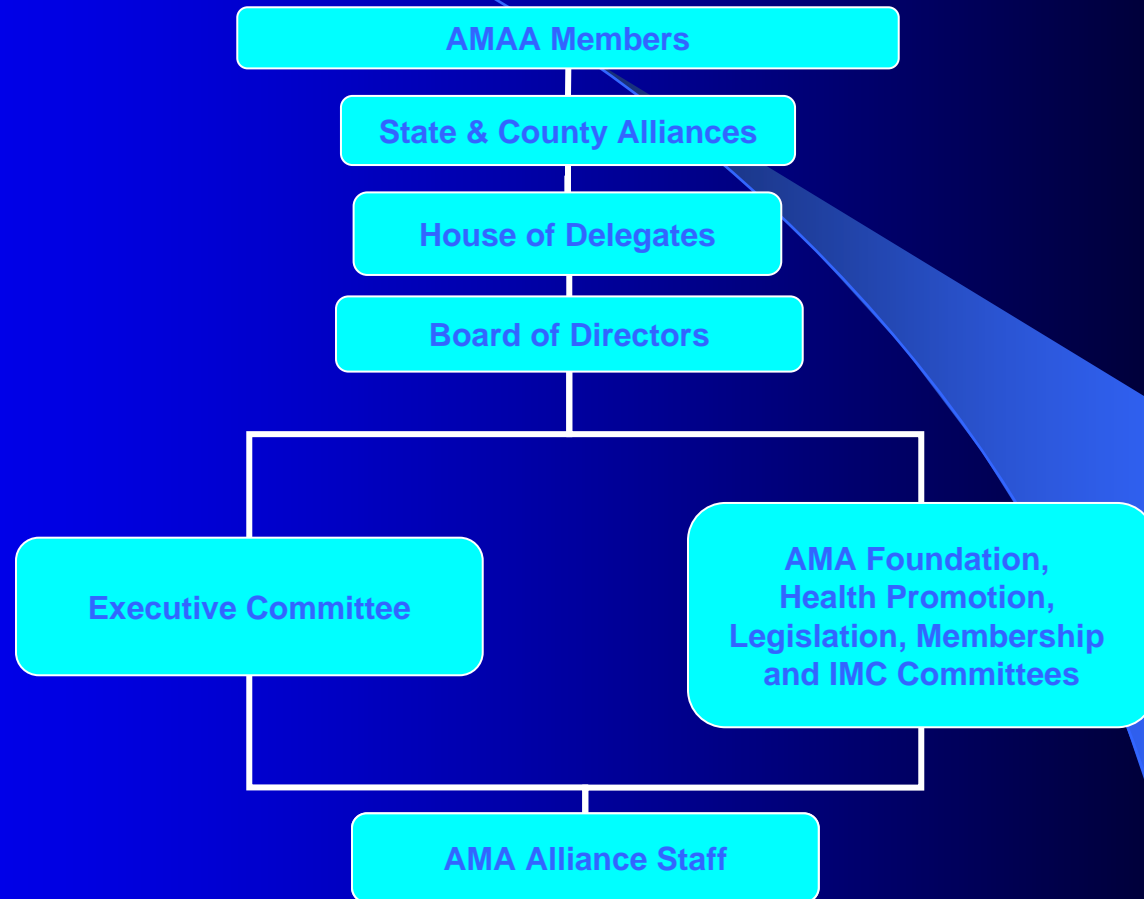
The Iowa Medical Society Alliance provides the County Alliances with resources, and technical support, such as:

- How To Implement Health Projects
- Legislative Issues at the State Level
- Membership Lists
- Leadership Training

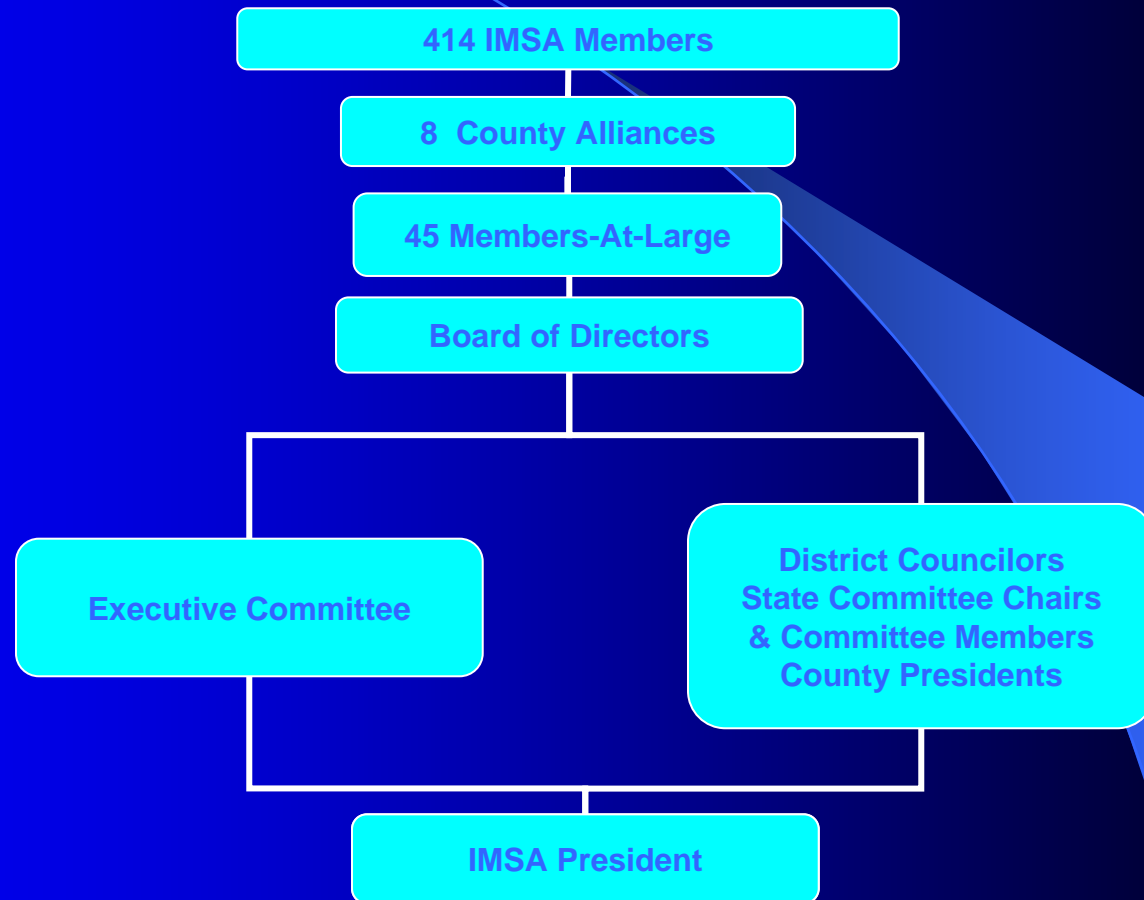
The County Alliances support the medical family by providing resources and support, such as:

- Community Health Projects
- Advocating at the Local Legislative level
- Social Networks for Medical families
- Opportunities to Grow as Leaders

AMAA Organizational Chart



IMSA Organizational Chart



Organized Alliance Counties in Iowa

Cerro Gordo

Clay

Johnson

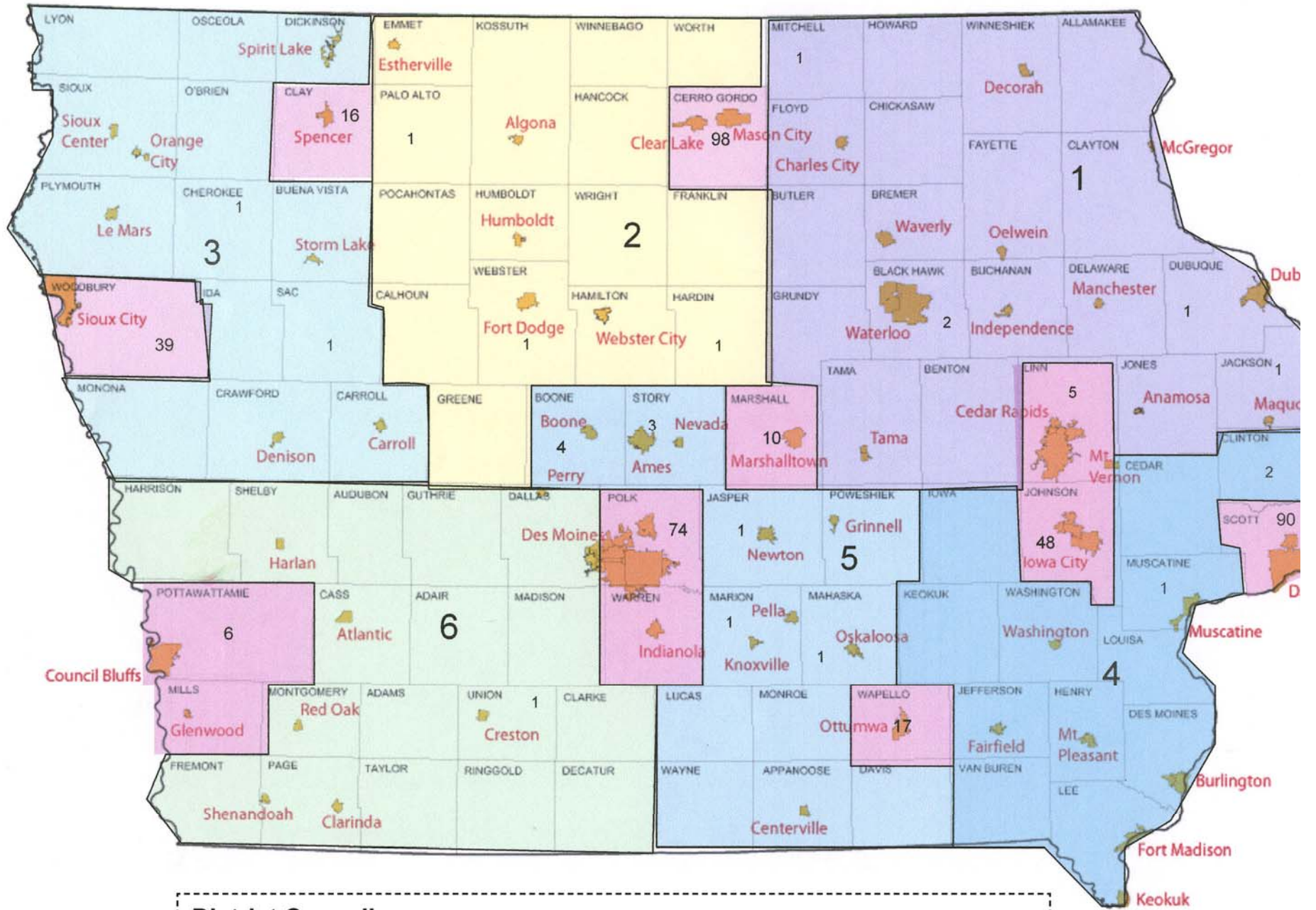
Marshall

Polk

Pottawattamie

Scott

Woodbury



District Councilors:

Critical roles and capabilities execute and ensure consistency, quality and timeliness.

Alliance Board

Decides strategic goals and organizational relationships. Establishes priorities for commitment of resources and funds. Provides informative, interesting speakers and leadership development at meetings.

Alliance Health Projects Committee

Serves as a resource for the State providing materials from the AMAA and assistance to counties and members-at-large.

Alliance Legislative Committee

Supports medicine friendly legislation to insure safe and accessible health care for the patients of Iowa. Assists and trains members on how to be legislative advocates.

Alliance Foundation Committee

Raises funds for the AMA Foundation during State meetings, and encourages county AMAF Chairs to look for innovative ways to do so.

Alliance Membership Committee

Supports members who understand medicine, medical issues and medical families.

Legislation

Alliance members are deeply involved in grassroots lobbying for health care legislation. The Alliance works to support the policies set forth by the IMS, using their voice to affect the practice of medicine.

IMPAC

(Iowa medical Political Action Committee)

Contributions to IMPAC help elect pro-medicine legislators sensitive to the needs of Iowa physicians. By joining IMPAC, you will help the IMS continue to fight for enhanced liability reform, increased access to care, and improved physician reimbursement.

Health Promotion

- The AMA Alliance is the largest national volunteer arm of the AMA, dedicated to public health and safety. We address several critical issues impacting the communities in which we live, such as violence, tobacco use, and assistance to the medically underserved.
 - Screen Out! campaign targets getting tobacco usage out of youth-rated Hollywood films. The Alliance's campaign utilizes letter-writing, petition-drives and endorsement campaigns to reach the motion picture industry.

HEALTH PROJECTS



- **Stop America's Violence Everywhere (SAVE) program** targets the 15 million children in first through fourth grade in every public and private school. Since the 1995 inception of SAVE, Alliance members have developed more than 700 antiviolence programs, including mentoring programs, teen hotline cards and mental health seminars, and distributed more than 2 million pieces of anti-violence materials.

HEALTH PROJECTS

The IMSA also supports an S.O.S program (Spouses Offering Support) for members of the Alliance.

AMA Foundation

- The IMSA raises money for the AMAF, the philanthropic arm of the AMA. Since 1950, the Foundation has raised over \$80million in gifts for medical schools in the form of loans to medical students, interns and residents, and supported numerous research projects through its grants program.
- Funds collected by the IMSA can be designated to benefit the 2 medical schools in Iowa (the University of Iowa, or the DMU)
- Funds can also be designated to benefit the Fund for Better Health

Medical & Resident Physician Spouses

- The training years are the toughest years for the young spouses of medical students and/or residents. The Alliance recognizes the need to provide support for this special group.
- **Physicians-In-Training Host program-** the IMSA provides free housing for fourth-year medical students when they travel for residency interviews
- Offers leadership development opportunities
- Has a representative on the Board

Iowa Medical Society Alliance

Working to build healthy
communities and secure the future
of medicine.

